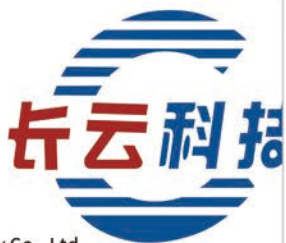


Haley

Head of Sales

Phone: 0086 17838311778

WhatsApp: +86 17838311778



Zhengzhou Zhishi Changyun Technology Co., Ltd.

ADD: No. 25, Building 12, West District, Electronic and Electrical
Industrial Park, High-tech Zone, Zhengzhou City, Henan Province

URL: <https://zscy.goldsupplier.com>



►
**CORPORATE
PUBLICITY**

Company Profile

Zhengzhou Zhishi Changyun Technology Co., Ltd. is headquartered in Zhengzhou Electric

The sub-electrical industrial park focuses on technology research and development, product manufacturing and sales services. As one of the high-tech enterprises, the company is mainly committed to: optical cable lead-in machine, cable conveyor, grinding machine, cable blowing machine, nano light wave oven R&D and production of other series of products. Now it has a modern standard of 6,000 square meters. Quasi-plant, as well as a highly professional R&D and production team, existing employees. There are more than 150 people and more than 20 professional technical research and development teams. The company has nearly 100 items Utility model technology patents and invention patents recognized by the China Intellectual Property Office. Appearance patents, software copyrights, etc., have been recognized by the Zhengzhou Municipal Government. High-tech enterprise, for many years has been awarded the "Contract-abiding and Trustworthy Enterprise". industry". The company has always adhered to the principle of "R&D as the driving force, quality as the core, and service" as the fundamental enterprise development concept, with its completely independent R & D design. And excellent quality control system, benchmarking international enterprises, the pursuit of higher quality quality, establish a stronger brand, and strive to become a world influential and competitive. Strive for the world's first-class modern intelligent equipment manufacturing enterprises, for the construction of manufacturing. Strengthen the country and make new contributions to the realization of the "Chinese Dream". Quality is the cornerstone of the brand, and quality is the reputation of the enterprise.

Changyun is in. At the same time of large-scale development, quality management has always been put in the first place. Since its establishment in 09, we have always adhered to quality management and international practices. Rail, all-round implementation of the ISO9001 quality assurance system, from the quality management theory. Concept, product design, material procurement, processing and manufacturing, testing and inspection and other streams. process, each process is meticulously made, with true love and hard work to create classics. quality, each equipment is designed, manufactured and assembled under strict control. Installation, testing, packaging, installation and commissioning, until the final delivery to us. Customers, contributing diamond-like long-term products to customers are Changyun's greatest Relief and pride.

company culture

vision

To be a respectable business

mission

Achieve yourself and achieve others

spirit

Cooperation, growth, achievement,
innovation, passion, reliability

mentality

Withstands the stick kill
Stand up to the killing
Endure loneliness
Enjoy the prosperity



CHANGYUN PRODUCT FEATURES

Independent research and development, integrated production and sales. Utilizing strong R&D capabilities, combined with customer feedback, we can optimize product design in real-time to better meet market demands.



Efficient service and worry-free after-sales

Adhering to the principle of "sincere, fast, Professional and thoughtful" service Concept, to provide customers with the full Directional, thoughtful, and meticulous Serve.



Authoritative certification, a number of patents

Implement ISO9001 quality in an all-round way Quantity assurance system, with a number of them Product technology patents, patents also In the ongoing application



The factory is strict, and the purchase is worry-free

From the concept of quality management, products Design, material, processing Manufacturing, testing, inspection, etc process, each process is finely crafted As a factory, 5 tests and 3 inspections are required The product can only be shipped after it is qualified.

CHANGYUN ADVANTAGE

6000 square meters of modern factory
20+ technical R&D team

It has been established for more than 10 years
More than 100 patents

Won the CCTV brand

More than 100 products in 8 series
ISO9001 professional certifications

8 major pain points in equipment procurement



Numerous customer choices
Changyun's 8 advantages

• Poor quality:

Small manufacturers supply, unstable quality Service levels are limited

• Large companies:

It has been established for more than 10 years and has 6,000 at present Flat modern standard production plant

• Not practical:

Lack of R&D innovation in equipment, can't Meet new market demands

• Adjust quickly:

According to customer needs and feedback, timely adjustment The whole product design can quickly meet customer needs

• product is useless:

The equipment only has regular functions, and it cannot be determined service, not suitable for special working conditions

• Strong R&D:

Quickly iteratively upgrade the product, which can be full Meet the customized needs of different customers

• Insufficient capacity:

The manufacturer's production capacity is insufficient and weak Availability affects normal use

• Fully stocked:

Sufficient product stock, can be used the fastest Time to provide customers with the products they need

• price messy:

The price system is chaotic and always buys High

• Transparent pricing:

Changyun adopts the manufacturer-designated sales model, All product prices are open and transparent

• Poor creditworthiness:

Small companies have poor reputation and operate against risks Low ability and easy to be deceived

• Honesty and trustworthiness:

It has been rated for many years in a row "Honest Performance Enterprise"

• Slow service:

Poor service responsiveness, delivery The cycle is long and the service is not timely

• Prompt service:

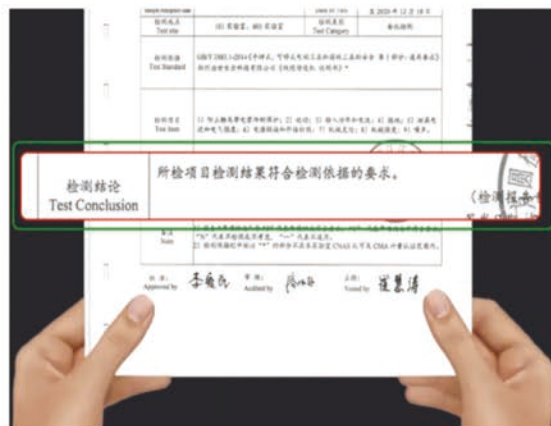
Adopt service accountability to ensure that when received Deal with customer feedback problems as soon as possible

• No after-sales:

Only look at the benefits, do not pay attention to the quality of the product, It is not responsible for the after-sales of related products

• Focus on quality:

Strictly abide by the ISO9001 quality system There are a variety of authoritative certifications, and the quality is more guaranteed



Technology R&D Center

R&D has always been

Changyun's The core driving force, Changyun technology R&D center with new technology, new Process research and development as the core task, At present, it has

nearly 20 top researchers Personnel, with the resources of scientific research institutes Deep experts, also well-known in the industry The old cannon developed and designed by the enterprise, There are also outstanding talents graduated from key universities, and the average working experience of the R&D and design team is more than 15 years, a nd has rich experience in mechanical design and R&D, Under the guidance of the company's strategy, the R&D center is positioned to "strengthen platform construction, cultivate core technologies, focus on process optimization, serve the production market, pay attention to user value, and lead market demand." Currently, Changyun has 77 existing patents, with nearly 10 patents applied for on average each year. With a professional, focused, and meticulous attitude, we refine every piece of equipment and every detail to develop high-quality, high-tech, and high-efficiency products urgently needed in the market. This creates a community where scientific research and the market, as well as the company and customers, are closely integrated, providing customers with high-quality products and services.

Implement the ISO9001 quality assurance system in an all-round way, from the quality management concept, Product design, material procurement, processing and manufacturing, Testing and inspection processes, each process is meticulously made, Create classic quality with perfection and professionalism.

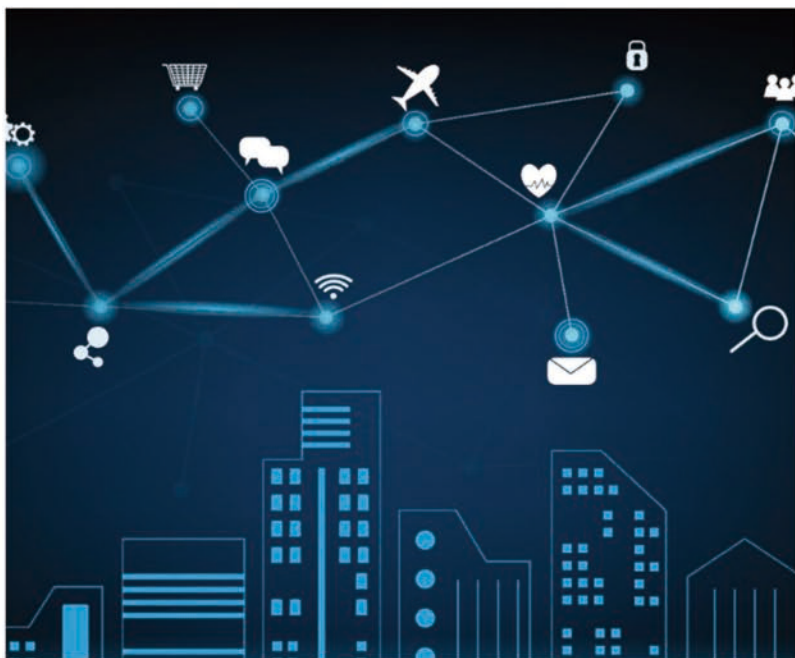
Five tests

Compressive testing of structural parts
Control system durability testing
Abrasion resistance test of rubber products
Overload testing of power components
Fatigue resistance test of transmission components

Three verifications

Quality inspection of the whole machine
Component inspection
Simulated condition inspection





Changyun service system

Changyun has a complete and sound after-sales service system, with after-sales service center, Three-level services of manufacturing plant, R&D center, and construction team, and with the refined accessories ordering system, fully respond to customer needs, "high standards, strict quality control" It is the company's quality tenet, and "sincere, fast, professional and thoughtful" is the company's service concept. Attentively provide customers with all-round, thoughtful and meticulous services.

The whole machine is guaranteed for 1 year (wearing parts warranty manual) and free maintenance for life

Directory

Company Profile	01
Corporate culture	02
Changyun product features	03
Changyun advantage	04
Changyun quality system	05
Changyun service system	07
Cable conveyors	09
Cable grinder	14
Fiber optic cable hauling machine	16
Environmental Impact Letter	18

CABLE CONVEYOR

A cable conveyor is an electric machine that lays power cables (or communication cables). Can be used with cable traction machine, lifting. The machine and other cable laying machines and tools are used together, and the construction is convenient and fast, which can greatly save manpower and material resources and effectively reduce construction costs. It is suitable for large-scale urban power grid transformation, suitable for large-section and long-distance cable laying, reducing labor intensity and improving construction quality, cable conveyor thrust, small size, light weight, easy to operate, in cable pipes, tunnels, straight, long distances. It is especially suitable for off-conveying and other occasions. The types of cable conveyors are divided into: diesel cable conveyors, gasoline cable conveyors and electric conveyors, lifting. The use of XRS type power conveyors is becoming more and more extensive, because this kind of cable conveyor can be used in series to achieve large-scale, conveying engineering of long-distance large-scale cables.

Enhanced900

Model: Enhanced 900
Power supply: AC380V (standard)
AC220V (custom)
Speed adjustment:
4 gears + infinitely variable speed
Multi-station joint control
Control mode:
control panel + Remote control
Fine-tune the speed of a single unit
Power: 1800W X2
Conveyor speed: 4~26m/min
Maximum pulling force: 8000N
Cable diameter: 2~24cm
Delivery method: Twin track conveyor
Dimensions: 106.4X57X53cm
net weight: 214kg



- ✦ The maximum conveying force of the double pure copper core motor is 8000N. High tensile force, fast speed, stable operation and low noise.
- ✦ Remote control, more convenient operation.
- ✦ Four-speed continuously variable speed with start and stop, push and pull one-key switching. The whole system is equipped with a joint control module, which can be used by multiple joint controls.
- ✦ The speed increase and decrease in the range can be controlled freely. High-quality wear-resistant rubber block, thickened and wear-resistant conveying without slipping. Panel + remote control, easier operation.

Model: OBailey200
Powertrain: Electric motor
Traction: 200kg
Cable diameter: 10~100mm
Voltage used: 380V

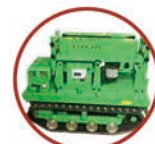
Power: 750W
Conveyor speed: 5-12m/min
Dimension: 76×64×46.5cm
net weight: 64.5kg



OBailey200

Model: TANK900
Powertrain: Electric motor
Speed adjustment: 4 gears + continuously variable speed
Control mode: control panel + remote control
Walking speed: 0~46m/min
Conveyor speed: 4~26m/min

Conveyor pull: 6000N
Cable diameter: 2~24cm
Generator power: 4kw
Fuel tank volume: 5L
Dimension: 126×80×100cm
net weight: 430kg



TANK900

Model: Conveyor550
Power supply: AC380V (standard)
AC220V (custom)
Speed adjustment:
4 gears + continuously variable gear
Multi-station joint control
Control mode:
Control panel + remote control
Fine-tune the speed of a single unit

Power: 1500W
Conveyor speed: 4~36m/min
Maximum pulling force: 2900N
Cable diameter: 1~5cm
Delivery method: Crawler conveyor
Dimensions: 74X36.5X48.4cm
net weight: 63kg



Conveyor 550

Model: Conveyor400
Power supply: AC380V (standard)
AC220V (custom)
Speed adjustment: Constant speed
Control mode: Switch control
Power: 2200W

Conveyor speed: 26m/min
Maximum pulling force: 3600N
Cable diameter: 1~10cm
Delivery method: Crawler conveyor
Dimensions: 74X42X56cm
net weight: 77kg



Conveyor400

Model: 600honghuang
Power supply: AC380V (standard)
AC220V (custom)
Speed adjustment:
4 gears + continuously variable gear
Multi-station joint control
Control mode:
Control panel + remote control
Fine-tune the speed of a single unit

Power: 1500W
Conveyor speed: 2.7~22m/min
Maximum pulling force: 3800N
Cable diameter: 1~10cm
Optimal speed: 10~16m/min
Dimensions: 74X46.5X55.5cm
net weight: 86kg



Conveyor600 Honghuang



Conveyor650

Model: Conveyor650
Power supply: AC380V (standard)
AC220V (custom)
Speed adjustment:
4 gears + continuously variable gear
Multi-station joint control
Control mode:
Control panel + remote control
Fine-tune the speed of a single unit

Power: 2200W
Conveyor speed: 4-36m/min
Maximum pulling force: 3600N
Cable diameter: 1~10cm
Conveying mode: crawler conveyor
Dimensions: 74X42X56cm
net weight: 77kg



CY-8

Model: CY-8
Power supply: AC380V (standard)
AC220V (custom)
Speed adjustment: Constant speed
Control mode: Switch control
Power: 1500W X2

Conveyor speed: 19.2m/min
Maximum pulling force: 6000N
Cable diameter: 2~24cm
Conveying mode: crawler conveyor
Dimensions: 115.4X58X53cm
net weight: 243kg



CY-9

Model: CY-9
Power supply: AC380V (standard)
Speed adjustment: Constant speed
Control mode: Switch control
Power: 2200W X2

Conveyor speed: 24m/min
Maximum pulling force: 8000N
Cable diameter: 2~24cm
Dimensions: 110X57X53cm
net weight: 265kg



high speed900

Model: high speed900
Power supply: AC380V (standard)
AC220V (custom)
Control mode:
Control panel + remote control
Operating voltage: AC380V
Power: 2200W X2

Conveyor speed: 10~36m/min
Maximum pulling force: 7000N
Cable diameter: 4~36cm
Conveying mode: double track conveyor
Dimensions: 115X64X54cm
net weight: 265kg



mini900

Model: mini900
Power supply: AC380V (standard)
AC220V (custom)
Speed adjustment:
4 gears + continuously variable gear
Multi-station joint control
Control mode:
Control panel + remote control
Power: 1500W X2

Conveyor speed: 4~26m/min
Maximum pulling force: 6000N
Cable diameter: 2~18cm
Conveying mode: double track conveyor
Dimensions: 107.4X47.4X46cm
net weight: 182kg

Model: Standard Edition900
Power supply: AC380V (standard)
AC220V (custom)
Speed adjustment:
4 gears + continuously variable gear
Control mode:
Control panel + remote control
Multi-station joint control
Power: 1500W X2

Conveyor speed: 4~26m/min
Optimal speed: 10~16m/min
Maximum pulling force: 6000N
Cable diameter: 2~24cm
Conveying mode: Twin track conveyor
Dimensions: 106.4X57X53cm
net weight: 210kg



Standard Edition900

Model: Multi-layer bridge tractor - gecko
Power supply: AC220V
Push and pull maximum speed: 3-12m/min
Control mode: single and double control
Power: 0.785KW

Traction: 1400N
Cable diameter: 1-6cm
Transmission mode:
upper and lower double
transmission actuation
Dimensions: 67X25X38cm
Suspension part weight: 32Kg



gecko

Model: Jiangniu1
Power supply: AC380V (standard)
AC220V (custom)
Speed adjustment:
4 gears + continuously variable gear
Multi-station joint control
Control mode:
Control panel + remote control
Fine-tune the speed of a single unit

Power: 2200W
Conveyor speed: 4~15m/min
10m/min Optimal operating conditions
Maximum pulling force: 4200N
Cable diameter: 1~10cm
Dimensions: 75X41X55cm
net weight: ≈71kg



Jiangniu1

Model: Jiangniu2honghuang
Power supply: AC380V (standard)
AC220V (custom)
Speed adjustment:
4 gears + continuously variable gear
Multi-station joint control
Control mode:
Control panel + remote control
Fine-tune the speed of a single unit

Power: 3000W
Conveyor speed: 4~26m/min
Maximum pulling force: 5000N
Cable diameter: 1~18cm
Conveying mode: crawler conveyor
Dimensions: 90X53X67cm
net weight: 125kg



Jiangniu2honghuang

Model: Jiangniu3
Powertrain: Gasoline generator
Start mode: electric start +
hand pull double start
Speed adjustment:
4 gears + continuously variable gear
Multi-station joint control
Control mode:
Control panel + remote control
Fine-tune the speed of a single unit

Power: 1800W
Conveyor speed: 4~26m/min
Maximum pulling force: 4800N
Cable diameter: 1~18cm
Conveying mode: crawler conveyor
Dimensions: 90.5×65×65cm
net weight: 131kg



Jiangniu3



Jiangniu5

Model: Jiangniu5
Powertrain: Diesel generator
Start mode: hand pull start
Speed adjustment:
4 gears + continuously variable gear
Multi-station joint control
Control panel + remote control
Fine-tune the speed of a single unit

Power: 1800W
Conveyor speed: 4~26m/min
Maximum pulling force: 4800N
Cable diameter: 1~18cm
Conveying mode: crawler conveyor
Dimension: 90×67×66cm
net weight: 138kg



Jiangniu6

Model: Jiangniu5
Powertrain: Diesel generator
Start mode: electric start + hand start
Speed adjustment:
4 gears + continuously variable gear
Multi-station joint control
Control mode:
Control panel + remote control
Fine-tune the speed of a single unit

Power: 1800W
Conveyor speed: 4~26m/min
Maximum pulling force: 4800N
Cable diameter: 1~18cm
Conveying mode: crawler conveyor
Dimension: 94×70×66cm
net weight: 156kg



**Instrument cables
Dedicated conveyors
customize**

Model: Dedicated conveyors
Power supply: AC380V(standard)
AC220V(custom)
Speed adjustment:
4 gears + continuously variable gear
Multi-station joint control
Control mode:
Control panel + remote control
Fine-tune the speed of a single unit

Power: 750W
Conveyor speed: 4~26m/min
Maximum pulling force: 2000N
Maximum opening size: 5cm
Optimal speed: 10~16m/min
Dimensions: 74X43.8X55.5cm
net weight: 76kg

Capstan winch

The grinding machine is a necessary construction product such as tight wires and vertical rods when erecting underground wiring of empty cables, which can be used in various complex rings Smooth and convenient erection of wire lifting, traction or tightening of wires. It is widely used in the construction of electric power, telecommunications, and municipal engineering, and is suitable for field fields Place. It has been proved by the actual operation on site that it has reasonable structure, small size, light weight, high power, low noise and operation Flexible, easy to handle and other advantages, well received by the majority of users. The motorized grinder is composed of a drum wheel, a gearbox, a diesel engine or gasoline engine and a base frame, and the motorized grinder works Principle: The grinding groove is a traction groove directly connected with the wire rope, which is driven by a gasoline engine, diesel engine and electric motor force, through the gearbox to achieve the required speed, the whole machine is located on the steel structure, stable and easy to move.



Lijian6

Model: Lijian6
Maximum pulling force: 35KN
Speed: 5~20m/min
Power: 7.5kw
Power supply: AC380V
Speed regulation mode: stepless speed regulation
Control mode: control panel + remote control
Motor configuration:
automatic braking when power off
Dimensions: 122X47X59cm
Net weight: 380kg

- ✦ The high-quality copper core motor has large pulling force, fast speed and stable operation
Panel control, easy to operate
- ✦ Power-off braking protection to prevent sudden accidents
- ✦ Four-speed continuously variable speed with start and stop
- ✦ 4 gears are adjustable, the speed range is large, and the application range is wide
The thickened drum is compressive, wear-resistant, and does not deform
The shaft drive has high anti-impact and anti-vibration transmission efficiency
Heavy-duty gearbox with reliable quality and smooth operation



Lijian1

Model: Lijian1
 Power: 0.75kw/5.1A
 power supply: 220V/50Hz
 Motor speed: 1400r/min
 110mmcapstan: 8m/min-4000N
 55mmcapstan: 4m/min-8000N
 Winch size: 41X59X43.3cm
 Trolley size: 24X110X15cm
 Winch weight: 31kg
 Total weight: 41.2kg



Lijian4

Model: Lijian4
 Maximum pulling force: 35KN
 Speed: 5-15m/min
 Power: 5.5kw
 power supply: AC380V
 Speed regulation mode: stepless speed regulation
 Control mode: control panel + remote control
 Motor configuration: automatic braking when power off
 Dimensions: 115X30X40cm
 Net weight: 170kg



Hercules3

Traction: 30KN
 Power: 7.5KW(Inverter motors)
 Speed: 3-25m/min
 14m/minpulling force30KN
 16m/minpulling force26KN
 20m/minpulling force21KN
 Outer dimensions: 135X74X37cm
 Product weight: 345Kg



5T Gasoline winch

model: 5T Gasoline winch
 pulling force: 50KN
 speed:
 Positive1-4: 4.5-23m/min
 Reverse1-2: 3.5-9m/min
 size: 112X57X58cm
 net weight: 155kg



5T Diesel winch

model: 5T Diesel winch
 pulling force: 50KN
 speed:
 Positive1-4: 4.5-23m/min
 Reverse1-2: 3.5-9m/min
 size: 112X57X58cm
 net weight: 165kg

OPTICAL CABLE PULLER

With humanized design machine shape, easy to move and easy to transport. One person can operate the machine, which is equivalent to 4-5 people. The amount of labor is time-saving, labor-saving, labor-saving, and labor-saving, which greatly reduces the project cycle and production cost, and guarantees the optical cable in an all-round way. The construction is convenient and efficient.

After years of R&D, improvement, testing, and verification by a large number of users, the fiber optic cable hauling machine adopts built-in transmission. The device ensures the safety during construction, and the machine transmission force can be adjusted by the track/belt conveyor, and the force is uniform. The fiber optic cable is not picky and does not hurt the cable.

Changyun7

Start mode: electric start + hand pull double start
 Powertrain: Gasoline generator
 Motor power: 1200W
 Output pull: 4200N
 Control mode: button + remote control
 Control mod: Barton + Remote Control
 Conveyor speed: 0~80m/min
 Speed adjustment: 4 gears + stepless speed regulation
 Clamping method: new quick clamping
 Machine walking mode: manual walking
 Maximum opening of the track: 5cm
 Applicable cables: 4-288芯
 Dimensions: 95X60X80cm
 net weight: 115kg



- ✦ The high-quality gasoline engine has a maximum output of 3000N. It is easy to use, stable in operation, energy-saving and fuel-saving.
- ✦ Small size, light weight, easy to handle, suitable for a variety of working conditions.
- ✦ Manual four-gear operation, simple and safe operation.
- ✦ The new crawler conveyor has a greater pulling force and does not hurt the cable. 0~80m/min wide range speed control. Dual start mode of electric start + hand start.



Changyun1

Start mode: hand pull start
Powertrain: Gasoline engine
Output pull: 3000N
Control mode:
manual gear shifting
Conveying mode:
reinforced crawler conveyor
Conveyor speed: 0~80m/min

Speed adjustment: 4 gears
Machine walking mode:
hand pushing
Maximum opening of the track:
4cm
Applicable cable: 4-288
Dimensions: 101X80X80cm
Net weight: 105kg



Changyun3

Start mode: electric start +
hand start
Powertrain: Gasoline generator
Output pull: 3000N
Control: Manual shifting
Conveying mode:
reinforced crawler conveyor
Conveyor speed: 0~80m/min

Speed adjustment: 4 gears
Clamping method: new quick clamping
Machine walking mode: hand pushing
Maximum opening of the track: 4cm
Dimensions: 101X80X80cm
net weight: 110kg



Changyun5

Start mode: hand pull start
Powertrain: Gasoline generator
Motor power: 1200W
Output pull: 4200N
Control mode: key control
Conveying mode:
reinforced crawler conveyor
Conveyor speed: 0~80m/min

Speed adjustment: 4 gears +
stepless speed regulation
Clamping method: new quick clamping
Machine walking mode: hand pushing
Maximum opening of the track: 5cm
Applicable cables: 4-288
Dimensions: 103X80X80cm
net weight: 115kg



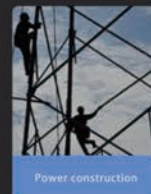
Changyun9

Start mode: electric start +
hand pull double start
Powertrain: Diesel generator
Motor power: 1200W
Operating voltage: 60V
Output pull: 4200N
Joint control function: Yes
Control mode:
Button + remote control
Conveying mode:
reinforced crawler conveyor

Conveyor speed: 0~80m/min
Speed adjustment: 4 gears +
stepless speed regulation
Clamping method: new quick clamping
Machine walking mode: automatic walking
Maximum opening of the track: 5cm
Applicable cables: 4-288
Dimensions: 103X80X80cm
net weight: 120kg

ABOUT US

Applicable scenarios



Power construction



Pipeline construction



Communication construction



Post and telecommunications construction

Company strength



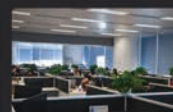
Patent wall



Factory



Production workshop



Office



Product showroom



Company front desk

04

Fields of application

Urban power grids
Transmission engineering,
substation engineering,
and distribution engineering
of urban power grids

Railway/Rail Transit
Laying works for railway lines
and inner tunnels

Petrochemical
Cable laying project in the
cable trench of the plant

Iron and steel smelting
Cable laying project in the cable
trench of the plant

